

SWT

The SWT/SWT3 series is our Wall Mount LED Andon Tower Light. It is flush mounted and bright with nearly 180° visibility.

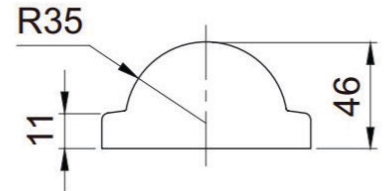


MODEL TYPES

- SWT-T - Continuous and Beige
- SWT-C - Continuous and Chrome
- SWTF-T - Continuous and Flashing Beige
- SWTF-C - Continuous and Flashing Chrome
- SWTZ-T - Continuous and Flashing Beige with audible alarm (85dB at 1M)
- SWTZ-C - Continuous and Flashing Chrome audible alarm (85dB at 1M)

FEATURES

- Low profile wall mount easily attaches to walls and minimizes damage
- Available in tan (beige) or chrome finish T = Tan C = Chrome
- Bright LED with a wide viewing angle
- LED fills double cut prism lens with diffusion filter
- Standard colors:
- 2-Color: Red, Green
- 3-Color: Red, Amber, Green
- Available: Red, Amber, Green, Blue, White
- Optional Built-in Buzzer: 85dB
- CE Approved: IP54



DRAWINGS

