



# EtherNet Tower Light Manual

ST56(M)EL/ST80(M)EL-ETNS(B)

  
**SIGNAWORKS**  
[www.signaworks.com](http://www.signaworks.com)



# General

- POLE Mounting type
  - ST56EL/ST80EL-ETN EtherNet LED Tower Lamp
  - ST56EL/ST80EL-ETNB EtherNet LED Tower Lamp with a built in buzzer
  - ST56EL/ST80EL-ETNS EtherNet LED Tower Lamp with a built in siren sound
  - ST56EL/ST80EL-ETNM EtherNet LED Tower Lamp with a melody sound
  
- POLE Direct type
  - ST56MEL/ST80EML-ETN EtherNet LED Tower Lamp
  - ST56MEL/ST80MEL-ETNB EtherNet LED Tower Lamp with a built in buzzer
  - ST56MEL/ST80MEL-ETNS EtherNet LED Tower Lamp with a built in siren sound
  - ST56MEL/ST80MEL-ETNM EtherNet LED Tower Lamp with a melody sound
  - ST56L,ST80 EtherNet products provide at the request of customers.



# Product Feature

- EtherNet is a communication system which can send and receive data worldwide where internet or LAN is constructed.
- EtherNet LED Tower Lamp controlled by EtherNet communication system through internet or LAN.
- Possible to remote control and monitor equipment by using various application since it can be controlled by web browser or application program.
- Possible to select suitable sound signal or buzzer sound and 5 colors of LED light as maximum.
- Volume

Buzzer	Siren	Melody
MAX 90dB/1m	MAX 85dB/1m	MAX 85dB/1m

\* Continuous volume or Buzzer type provides at the request of customers.



# Product Installation

1. Connection test of the product through control between PC and EtherNet

a. Installation Connection Diagram

- Please connect RJ45 cable to PC as below picture
- Below picture is installation method of EtherNet Tower Lamp (AC220V)



## ■ Power wires

- supply power to product in accordance with specification.  
(In case of AC220V, plug is attached product)

## ■ Ethernet Cable Connection

- It is necessary to change signal cable from direct form to cross form as UTP Cable connection of Tower Lamp is direct form.

- Or Connect PC by using cross cable.

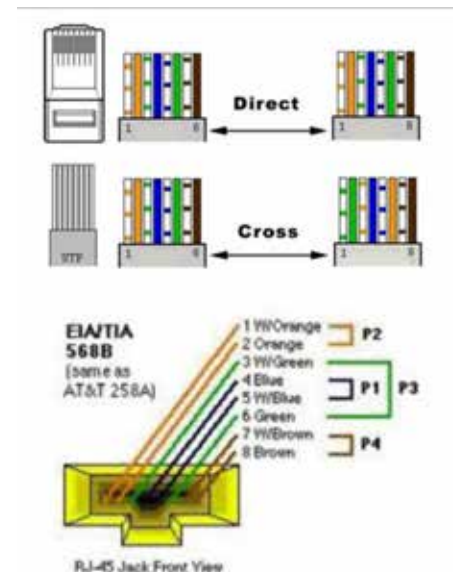
## ■ Necessary materials

RJ45 terminal one part, Cable of cross form

## ■ Connection

Change connection to cross form by using necessary material

Connect RJ45 terminal of UTP Cable to the socket of LAN card.



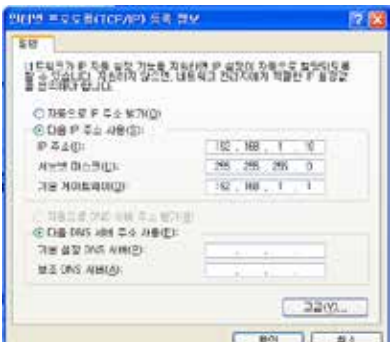
# Product Installation (cont.)



- b. IP Setting
- Set up free IP to test EtherNet Tower Lamp.



- Click in turn [my Network] property→ [Local area] property on the main screen.



- Click [Automatically IP receiving] to [Next IP address use] on the Internet protocol(TCP/IP)
- Set up address value of free PC to IP, subnet mask or basic gate way' and then complete IP setting.



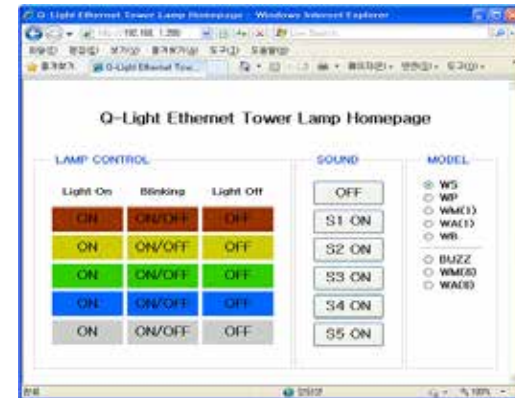
- c. IP Setting for EtherNet Tower Lamp
- Run the program of Tower Lamp IP Setting. MAC ID of connected device appears, if you click "Mac Find" button
  - MAC ID of connected device appears, if you click "Mac Find" button
  - Click "Read" button by choosing MAC ID of alterable device.
  - Setting IP, subnet mask or information of gate way shows up, when product ships
  - Click "Write" button after user put in the specified value on each text box about IP, subnet mask or basic gate way.
  - Turn the power of Tower Lamp and on again.



# Product Installation (cont.)

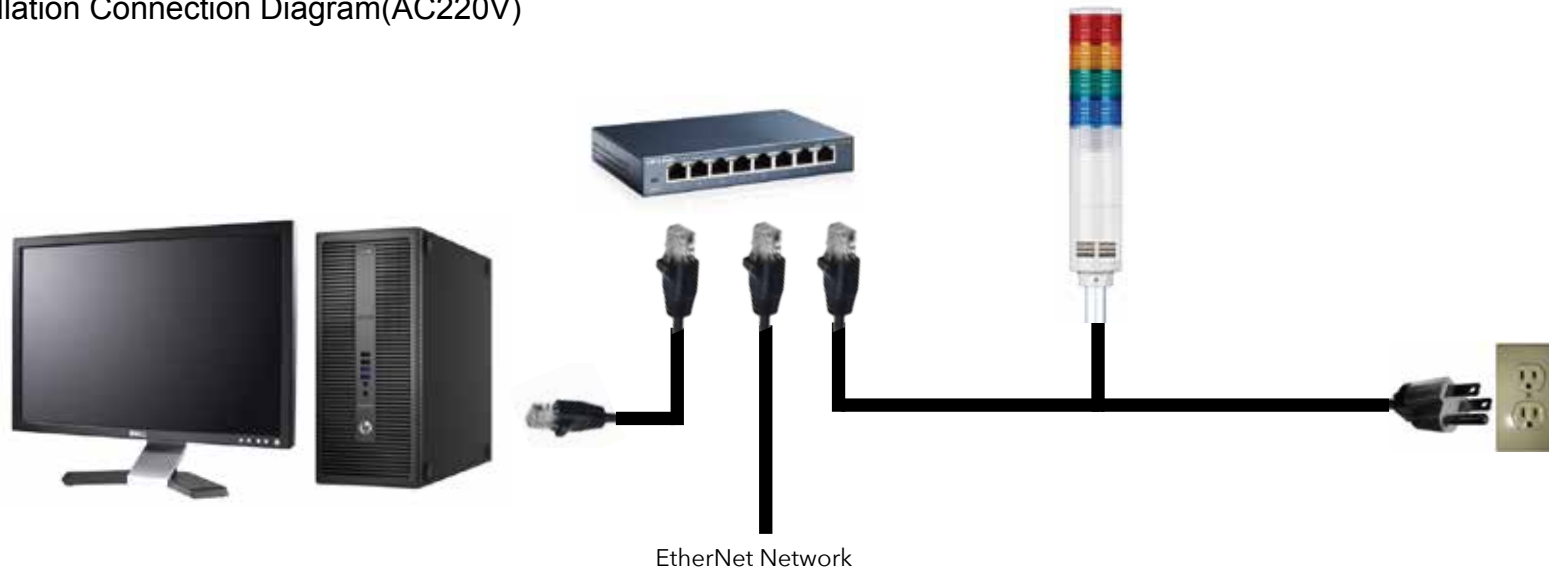
## d). Test

- Click “Internet Explorer” on the main screen.
- Test screen shows up on the screen, if user records IP address and runs it in address box.
- In the case of faulty connection, change IP address and set up again.
- If you click “Lamp On” button of each color, a corresponding tower lamp of color will be turned on.
- If you click “Lamp Off” button of each color, a corresponding tower lamp of color will be turned off.
- If you click “on” button for sound, sound signal will be output from tower lamp
- If you click “off” button for sound, sound signal will be stopped.



## 2. Connection test of the product through control between PC and EtherNet

### a. Installation Connection Diagram(AC220V)





# Product Installation (cont.)

- Power wires
  - supply power to product in accordance with specification. (In case of AC220V, plug is attached product)
- Signal line
  - It is possible to connect direct form at no extra work, when signal line connects HUB.
- b. IP Setting
  - Possible to set up program without IP Setting to test Tower Lamp.
  - User should grasp network information of PC to input IP and necessary information about Tower Lamp.
  - C:\ipconfig → <Enter> on DOS Prompt,  
Check IP of user's PC, Subnet Mask and Gateway

```
Ethernet adapter 호미공역연결 :  
  
Connection-specific DNS Suffix . :  
IP Address . . . . . : 192.168.10.101  
Subnet Mask . . . . . : 255.255.255.0  
Default Gateway . . . . . : 192.168.10.1
```

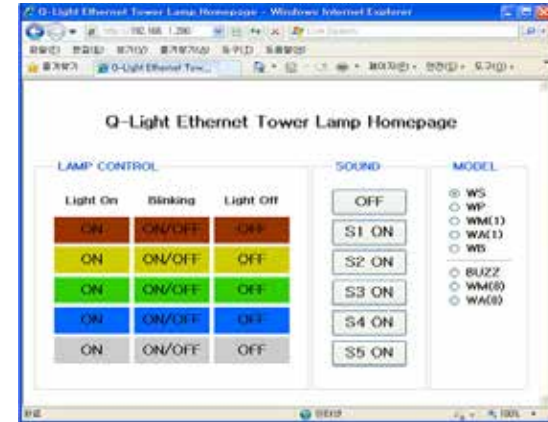
- MAC ID of connected device appears, if you click "Mac Find" button
- Click "Read" button by choosing MAC ID of alterable device
- Click "Write" button after user put in the specified value on each text box about IP, subnet mask or basic gate way. (IP must be different between IP address of user' PC and IP address of Tower Lamp)
- Turn the power of Tower Lamp and on again.



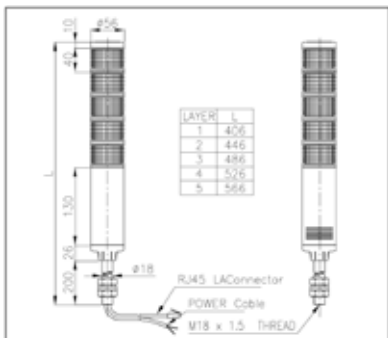
# Product Installation (cont.)

## c. Test

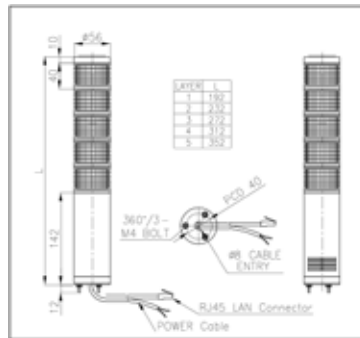
- Click “Internet Explorer” on the main screen.
- Test screen shows up on the screen, if user records IP address and runs it in address box.
- In the case of faulty connection, change IP address and set up again.
- If you click “Lamp On” button of each color, a corresponding tower lamp of color will be turned on.
- If you click “Lamp Off” button of each color, a corresponding tower lamp of color will be turned off.
- If you click “on” button for sound, sound signal will be output from tower lamp
- If you click “off” button for sound, sound signal will be stopped
- Provide installation file
- Signaworks provides CD that is packed with product.



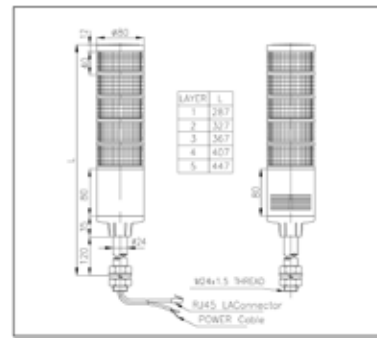
# External View Drawing



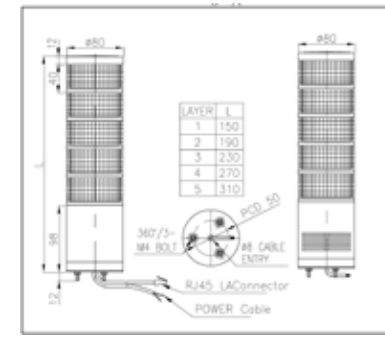
■ ST56EL Series (Pole Mounting Type)



■ ST56MEL Series (Direct Mounting Type)



■ ST80EL Series Pole Mounting Type



■ ST80EL Series Direct Mounting Type



# Lens Kit Change & Color Reformation

This product is manufactured as kit type, light part and lens are integrated. Each kit layer is assembled by connecting pin and pay deep attention when assemble each kit accordingly. Please refer to following drawing and explanation for right operating.

1) Make sure power is turned off before working.

2) Cover Removal

Unscrew the cover bolt [1] and remove the cover [2].

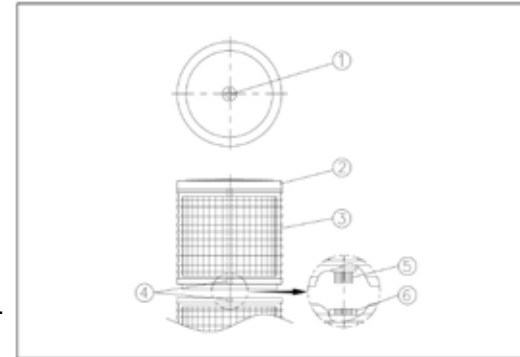
3) Lens Kit Removal

Remove the lens kit as needed layer by layer by pulling up each Lens kit [3].

4) Lens Kit Change & Assembling

- When assemble lens kits after lens kit change or color reformation, refer to following drawing and make sure joining point [4] (two vertical thick line on lens surface) and location of connecting pin [5].
- Make sure whether the connecting pin is smoothly put into the fitting hole [6] for safe joining.
- Make sure whether rubber packing on top of lower lens kit is put inside upper lens.

5) Assemble the product in reverse order of separating.



# Mounting

- This product was manufactured with the structure for indoor use (Out use is prohibited).
- Mount the place where exists low vibration, low impact, low moisture and low dust as long as possible. (Vertically)
- Refer to below information and drill necessary mounting hole on proper part of the product.
- Fix by using nuts originally equipped on mounting bolt on bottom of the product.

## ■ Direct Mounting

▪ Fix the product by using nuts(M4-3EA) originally equipped on mounting bolt on bottom of the product

▪ Use mounting bolt M8-2EA for the product which uses L-type bracket. Use mounting bolt M5-4EA for wall mounting type and product which uses round-type bracket.

## ■ Pole Mounting Type

Classification	ST45L/ST56L-Series	ST80L-Series
Standard	SCREW & NUT 18mm	SCREW & NUT 24mm
L-Type Bracket	LB18	LB24
Wall Mounting Type Bracket	LW18	LW24
Round-Type Bracket	SZ18	SZ24
Bendable Round Type Bracket	SL18	SL24

\* Please find following "Method of Tower Lamp Installation" and make sure corresponding mounting information.

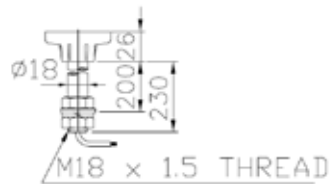




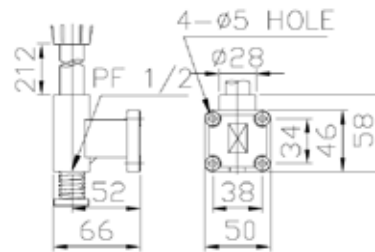
# Method of Tower Lamp Installation

There are 4 main methods of Tower Lamp installation in accordance with the locational condition or purpose of the installation. By referring to the following, select the method of installation corresponding to the product.

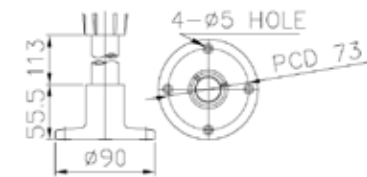
18mm  
SCREW &  
NUT  
(Standard)  
Standard types



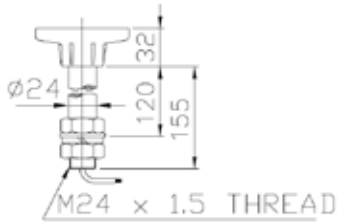
LW18



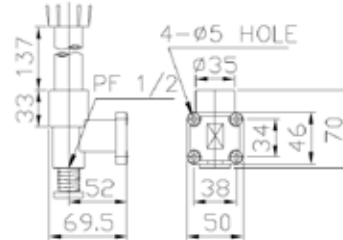
SZ24



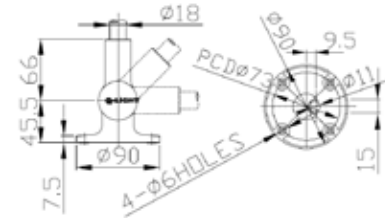
24mm  
SCREW &  
NUT  
(Standard)  
Standard types



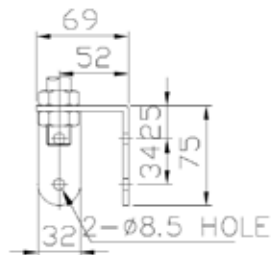
LW24



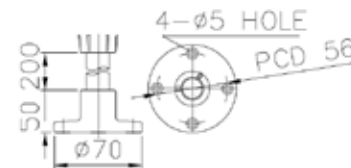
SL18



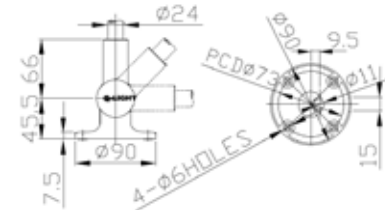
LB18



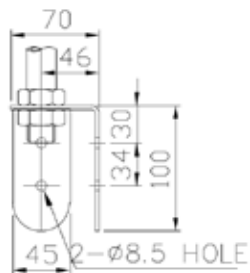
SZ18



SL24



LB24





## Caution

- If lens or body of the product is contaminated by chemicals such as thinner, benzene, the product can be damaged, discolored or deformed.
- Do not strongly pull the wire out from product. It can cause a disorder.
- Do not strongly turn lens kit. Lens kit can be damaged.



## Trouble Shooting

Situation	Main Reason	Solution
Neither Lighting nor Flashing	Running without power supply Error in executable program	Checking power supply Checking program installation Inquiring head office or agency
Feeble Lighting	Supplying Voltage Lower than Rated Voltage	Checking supply volt
Non-signal output	Defect speaker	Inquiring head office or agency



## Contact

3046 Home Road. Powell, OH 43065  
P: (740) 917-5781 F: (740) 917-5791  
[www.signaworks.com](http://www.signaworks.com)  
[sales@signaworks.com](mailto:sales@signaworks.com)