

# XP 22mm

## Panel Mount Strobe Light



### MODEL TYPES

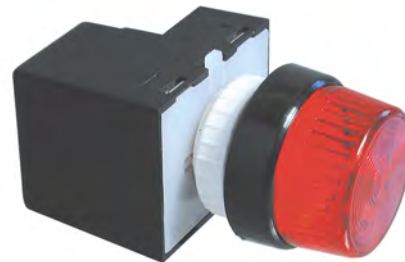
XP > 22mm Panel Mount Strobe

### FEATURES

- > Small, compact design for 22mm panel cut-out hole
- > 300 mm (12 inch) leads
- > Multi-voltage (10-100 VDC, 20-72 VAC), 110 and 220 AC models
- > NEMA1, 3R, 12, 13, 4X, IP67 rated
- > All models are CE compliant
- > 12 month guarantee

### ACCESORIES AND OPTIONS

- > 22mm enclosure with knock-out (PBB22-1)
- > Replaceable lens sections
- > Up to 5 lights mounted in sealed enclosure



### ORDERING INFORMATION

MV Drive Unit	> XP4XMV/1L
110VAC Drive Unit	> XPN4X110/1L
230 VAC Drive Unit	> XPN4X230/1L
Lens Assembly	> NL(color) [example: NLR]
Color	> Red, Amber, Green, Blue, Clear
Ordering Example	> XP4XMV/1L, NLA

VOLTAGE	CURRENT
12V DC	160 mA
24V DC	80 mA
110V AC	18 mA
220V AC	12 mA

