

**MODEL TYPES ::**

- USB56LB** > USB LED Tower Light, Pole Mount with Buzzer
- USB56LS** > USB LED Tower Light, Pole Mount with 5 Warning Sounds
- USB56LM** > USB LED Tower Light, Pole Mount with 5 Melodies

**FEATURES ::**

- > Connects directly to USB port of PC to control LED tower light
- > Powers directly from USB port, no external power required
- > Pre-wired, pre-assembled, 68 in. USB cable, pole, nuts & right angle bracket
- > Supports USB 1.1 or higher (2.0, etc.)
- > Bright LED bulbs with long life LED technology
- > Audible option for buzzer, 5 alarms and 5 melodies, 85dB at 1 meter
- > Program provided to control tower light on desktop via mouse
- > PC developer library for customer to write program for visual basic and others
- > More than 3 outputs on at a time may dim the lights or audible

**ACCESSORIES + OPTIONS ::**

- > Ground mount version USB56LG has bolts and no pole
- > Adjustable cubicle mounting bracket, SACB1
- > Bases: Flange (NT-550), Right angle (NT-560), Swivel (NT-570)

**ORDERING INFORMATION ::**

Model Type: USB56L, USB56LB, USB56LS, USB56LM  
 Number of Lights: 1, 2, 3, 4, 5  
 Colors: Red, Amber, Green, Blue, Clear

Ordering Example:

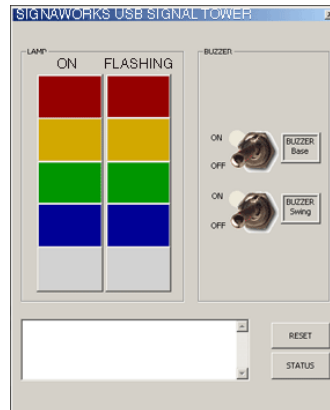
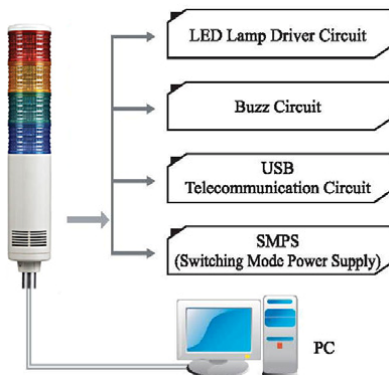
USB56LB-5 (5 light LED, USB with buzzer, pole mount)  
 USB56LM-3 (3 light LED, USB with 5 melodies, pole mount)



USB56LG NT-550 NT-560 NT-570



NT-190  
Cubicle Mount



Desktop Tool

