

# Motor Driven Sirens

## Duplo



### Features

- High output siren sound (127dB)
- Rugged construction for use in all environments
- Long life and run time
- Low voltage DC and high voltage AC for use in all applications
- Weatherproof to IP65
- Mounting bracket for ease of installation

### Overview

The Duplo is a powerful motor driven siren which produces a very high sound output despite its physically compact construction.

With its weatherproof design, the Duplo can be used both indoors and outdoors for security, fire alarm, process control alarm and general safety warning.

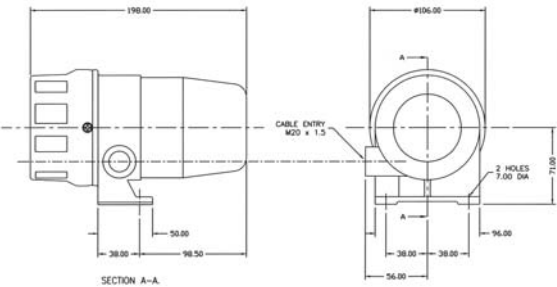
Due to its rugged construction, the Duplo be used in arduous conditions including mining and quarrying applications.

The Duplo has a continuous rating and has been designed for longevity

- Fire
- Railway/Marine
- Security
- Hazardous Area
- Industrial
- Public Warning

### Applications

- Fire alarm; security alarm; general safety warning; conveyors; process control alarm; vehicle alarm



Part No.	Colours	Audibility at 1m	Tones	Voltage	Current
18-980214	Grey/Black	Up to 127 dB (A)	1	110V AC/DC	2.7A
18-980217	Grey/Black	Up to 127 dB (A)	1	230V AC/DC	1.0A

IP Rating: IP65 Rating: Continuous Frequency: 1680Hz Operating Temp: -30°C to +45°C  
 Construction: Cast Aluminium Body, ABS Rotor, Stator and Cover Cable Entries: 1 Weight: 2kg

# Motor Driven Sirens

## Super M



### Features

- High output siren sound (127dB)
- Separate mounting bracket for easy installation
- Long life and run time
- Weatherproof for use both indoors and outdoors

### Overview

The Super M is a powerful motor driven siren which emits a very high sound output. Designed for surface mounting, it has a separate mounting bracket which may be secured in position first to allow for easy installation. In addition, it comes pre-wired with 1 metre of cable.

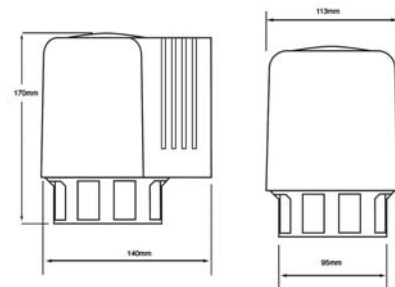
It has a weatherproof construction when wall mounted and is suitable for continuous use.

The Super M is ideal for both security and fire applications where a higher sound output is required such as in areas of high background noise.

- Fire
- Security
- Industrial
- Railway/Marine
- Hazardous Area
- Public Warning

### Applications

- Fire alarm; security alarm; general safety warning; conveyors; process control alarm; vehicle alarm



Part No.	Colours	Audibility at 1m	Tones	Voltage	Current
18-980047	Yellow	Up to 127 dB (A)	1	110V AC/DC	2.7A
18-980049	Yellow	Up to 127 dB (A)	1	230V AC/DC	1.0A

IP Rating: Weatherproof Rating: Continuous Frequency: 1680Hz Operating Temp: -30°C to +45°C  
Construction: ABS Cable Entries: 1 Weight: 1.8kg

# Motor Driven Sirens

## SO4



### Features

- High sound output (up to 125dB)
- Powerful low frequency sound
- Weatherproof to IP55
- Vertical siren for easy mounting
- Low voltage DC and high voltage AC variants

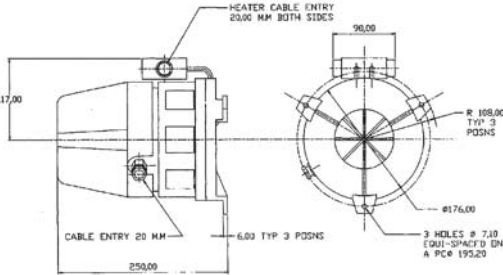
### Overview

The SO4 is a weatherproof motor driven siren designed for vertical mounting and designed for outdoor warning over small/medium areas.

Manufactured from cast aluminium, it is rugged in construction, has a continuous rating and is built for a long life outdoors

### Applications

- Fire alarm; security alarm; general safety warning; conveyors; process control alarm; vehicle alarm



- Fire
- Security
- Industrial
- Railway/Marine
- Hazardous Area
- Public Warning

Part No.	Colours	Audibility at 1m	Tones	Voltage	Current
18-980041	Grey	Up to 116 dB (A)	1	24V DC	8A
18-980036	Grey	Up to 125 dB (A)	1	110V AC/DC	3A(AC)/2.7A(DC)
18-980038	Grey	Up to 125 dB (A)	1	230V AC/DC	1.4A(AC)/1.2A(DC)

IP Rating: IP55   Rating: Continuous   Frequency: 900Hz   Operating Temp: -30°C to +45°C  
Construction: Cast Aluminium Body, Noryl Rotor   Cable Entries: 1   Weight: 4.5kg