

22mm (7/8") CONTROL & SIGNALING UNITS *(continued)*

GENERAL SPECIFICATIONS

	SWITCHES	PILOT LAMPS
Operating Temperature	-25° C to 70° C	
Humidity	45 to 85% Relative	
Degree of Protection	Dust tight, oil tight, IP65	
Operating Frequency	30 cycles/minute	
Terminal Strength	8Kgf/cm for 5seconds	
Insulation Resistance	100 M ohms min. at DC 500V Meggar	
Withstanding Voltage	1800V AC for 1 minute	
Contact Resistance	Less than 50m ohms (at initial closing)	
Shock	500 / 100 m/s ²	500 m/s ²
Vibration Resistance	10 to 55 Hz, 15 m/s ²	10 to 55Hz - 1.5mm
Life: Electrical	2 x 2,000,000 rated load	10,000 hours
Mechanical	2 x 2,000,000	LED 100,000 hours

CONTACT RATINGS

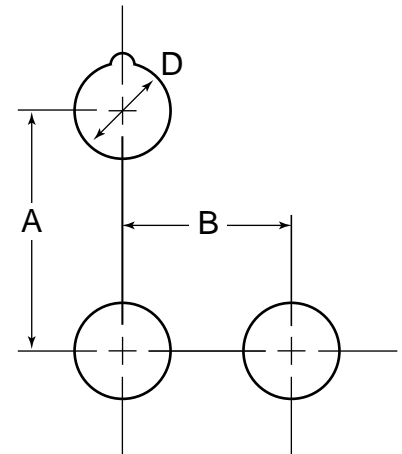
VOLTAGE	CURRENT		
	AC RESISTIVE	AC COS $\phi=0.3$	DC L/R=1MS LESS THAN
24V	10A	10A	6A
48V	10A	6A	3A
110V	10A	10A	2A
250V	6A	4A	1A

TRANSFORMER

RATING	VOLTAGE	TRANSFORMER SECONDARY VOLTAGE
100V	AC100 - 115 50/60Hz	5.5V \pm 0.5V
200V	AC200 - 230V 50/60Hz	Lamp: BA9S - T1 - 6.3V, 1 watt
220V	AC220 - 240 50/60Hz	
Direct Supply	6.3V, 12V, 24V	AC/DC 60V 2watt max.

PANEL CUT-OUTS & DIMENSIONS

SERIES TYPE	DIMENSIONS
D	22.5mm
A	57mm min.
Round	35mm min.
Square	35mm min.
Mushroom — 29mm	35mm min.
Mushroom — 40mm	45mm min.
Full Guard — 29mm	40mm min.
Full Guard — 40mm	47mm min.
Selector — Short Lever	35mm min.
Selector — Long Lever	42mm min.



Conforming Standards & Approvals



UL & CSA, File No. E168231 (S)

TUV Rheinland, Registration No. E 996007 E 01

CE Low Voltage Directive 73/23/EEC

Tested According to: EN 60947-1 : 1 1997 + a1, EN 60947-5-1 : 1997 + A11

SPECIFICATIONS SUBJECT TO CHANGE WITHOUT PRIOR NOTICE.